

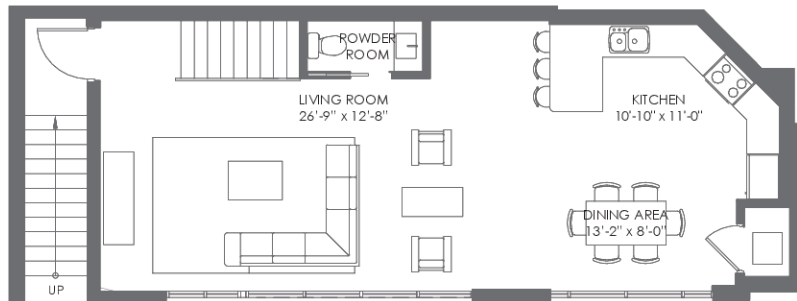
TOWNHOME
04

3 BEDROOMS + DEN / 2 1/2 BATHROOMS

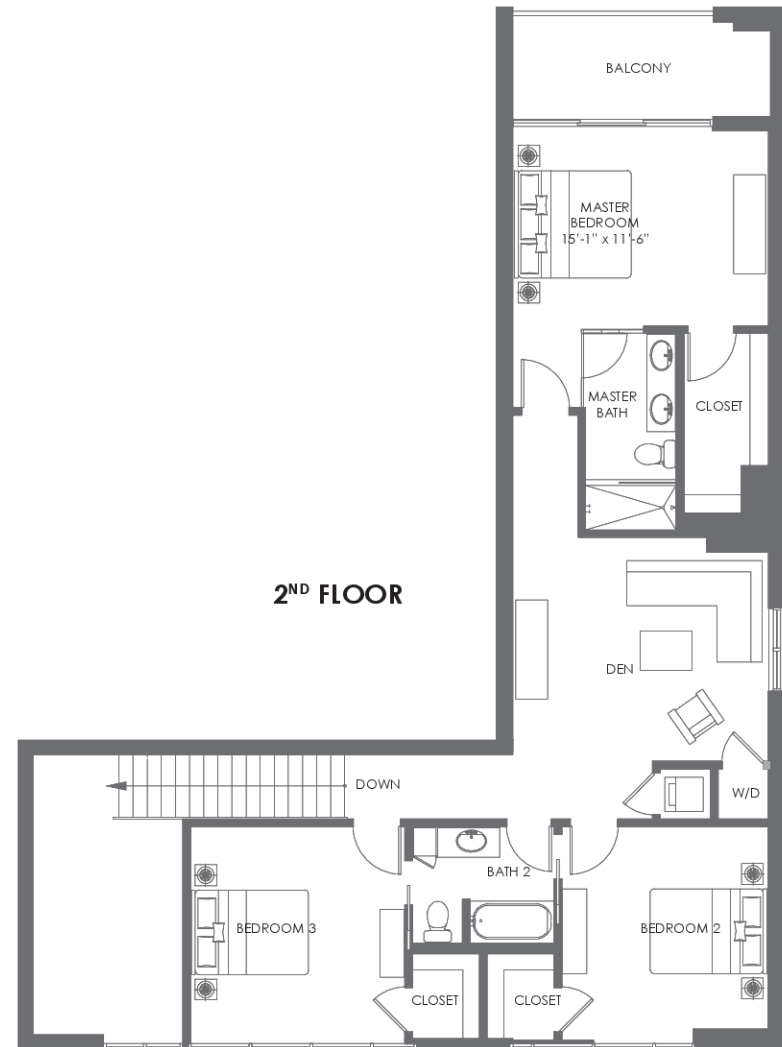
1ST FLOOR	763 S.F. (70.8 M ²)
2ND FLOOR	1,209 S.F. (112.3 M ²)
BALCONIES	100 S.F. (9.2 M ²)
TOTAL	1,972 S.F. (183.2 M ²)



1ST FLOOR



2ND FLOOR



BISCAYNE BAY



THE CRIMSON
WATERFRONT RESIDENCES

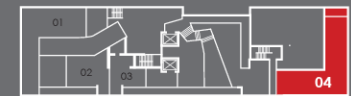
WWW.CRIMSONMIAMI.COM



TOWNHOMES



1ST FLOOR



2ND FLOOR

BISCAYNE BAY

Stated dimensions are measured to the exterior boundaries of the exterior walls and the centerline of interior demising walls and in fact vary from the dimensions that would be determined by using the description and definition of the "unit" set forth in the declaration. All floor plans and development plans are approximate and subject to change.