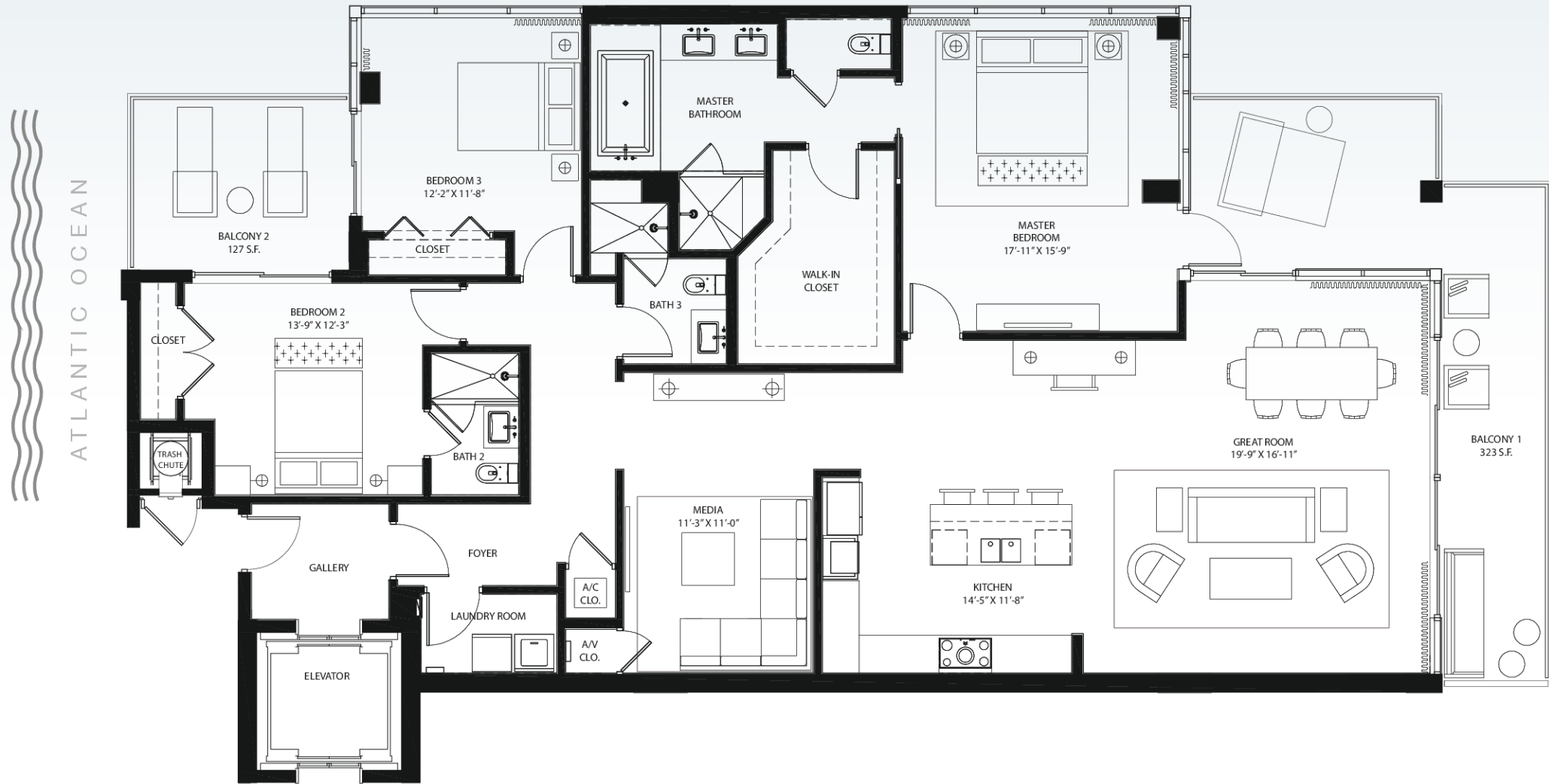
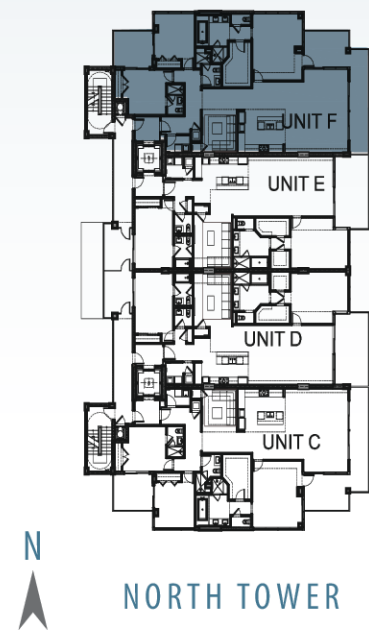


SAGE BEACH



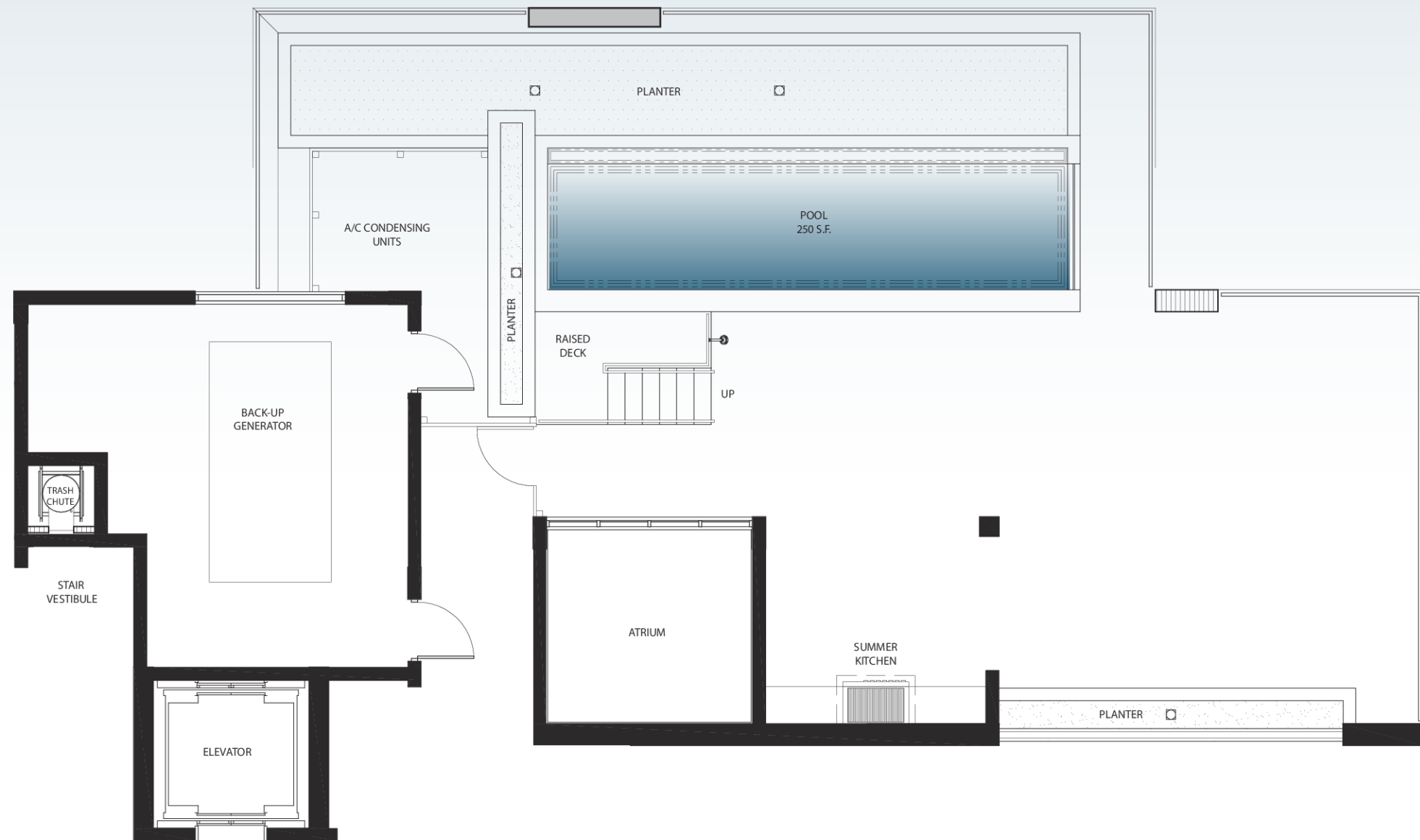
RESIDENCE F - PENTHOUSE

3 BEDROOMS PLUS MEDIA ROOM | 3 BATHS

AC AREA:	2,385 SQ. FT.
BALCONY 1:	323 SQ. FT.
BALCONY 2:	127 SQ. FT.
ROOF TERRACE:	1,093 SQ. FT.
ROOF POOL:	250 SQ. FT.
TOTAL:	4,178 SQ. FT.

Stated dimensions are measured to the exterior boundaries of the exterior walls and the centerline of interior demising walls and in fact vary from the dimensions that would be determined by using the description and definition of the "Unit" set forth in the Declaration (which generally only includes the interior airspace between the perimeter walls and excludes interior structural components). Additionally, measurements of rooms set forth on any floor plan are generally taken at the greatest points of each given room (as if the room were a perfect rectangle), without regard for any cutouts. Accordingly, the area of the actual room will typically be smaller than the product obtained by multiplying the stated length times width. For your reference, the area of the Unit, determined in accordance with this defined boundaries is 2,215 sq. ft.. All dimensions are approximate, and all floor plans and development plans are subject to change.

SAGE BEACH



RESIDENCE F - PENTHOUSE ROOFTOP

ROOF TERRACE:	1,093 SQ. FT.
ROOF POOL:	250 SQ. FT.
TOTAL:	1,343 SQ. FT.

Stated dimensions are measured to the exterior boundaries of the exterior walls and the centerline of interior demising walls and in fact vary from the dimensions that would be determined by using the description and definition of the "Unit" set forth in the Declaration (which generally only includes the interior airspace between the perimeter walls and excludes interior structural components). Additionally, measurements of rooms set forth on any floor plan are generally taken at the greatest points of each given room (as if the room were a perfect rectangle), without regard for any cutouts. Accordingly, the area of the actual room will typically be smaller than the product obtained by multiplying the stated length times width. All dimensions are approximate, and all floor plans and development plans are subject to change.