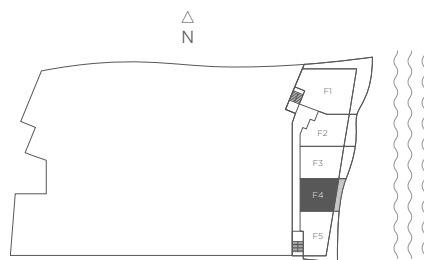
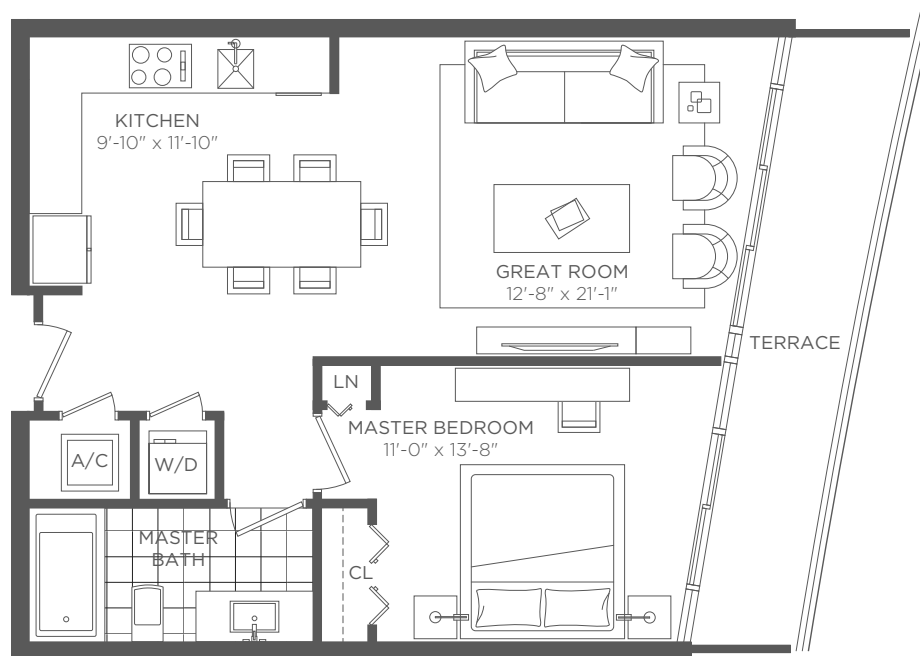


HYDE RESORT & RESIDENCES
HOLLYWOOD FLORIDA



RESIDENCE F4 1 BEDROOM 1 BATH

Interior 705 sq ft / 65.49 m² Terraces 121 sq ft / 11.24 m² Total 826 sq ft / 76.74 m²



Stated dimensions are measured to the exterior boundaries of the exterior walls and the centerline of interior demising walls and in fact vary from the dimensions that would be determined by using the description and definition of the "Unit" set forth in the Declaration which generally only includes the interior airspace between the perimeter walls (measuring from interior wall plane to interior wall plane) and excludes interior structural components. For your reference, the square footage area of the Unit, determined in accordance with those Unit boundaries as defined in the Declaration (from interior wall plane to interior wall plane), is 653 sq.ft. Note that measurements of rooms set forth on this floor plan are generally taken at the greatest points of each given room (as if the room were a perfect rectangle), without regard for any cutouts. Accordingly, the area of the actual room will typically be smaller than the product obtained by multiplying the stated length times width. All dimensions are approximate and may vary with actual construction. All floor plans and development plans are subject to change without notice. The furnishings and décor depicted is not necessarily included with the purchase of your Unit and is shown for purposes of illustration only. Consult your prospectus and Purchase Agreement to determine what is included with your Unit purchase, if anything.